

Microbiology & Immunology 2500: Pandemic Relief Package Flowcharts for Immunology

Purpose - This document contains content derived from the Microbiology & Immunology 2500 course and it specifically focuses on the immunology unit by providing simplified flowcharts to help students follow the immunological process.

How to use this review - Before the exam, we recommend that you attempt to familiarize yourself with all the content covered in the microbiology immunology unit. This document is a supplementary resource used to help organize all the flow charts of the immunology unit.

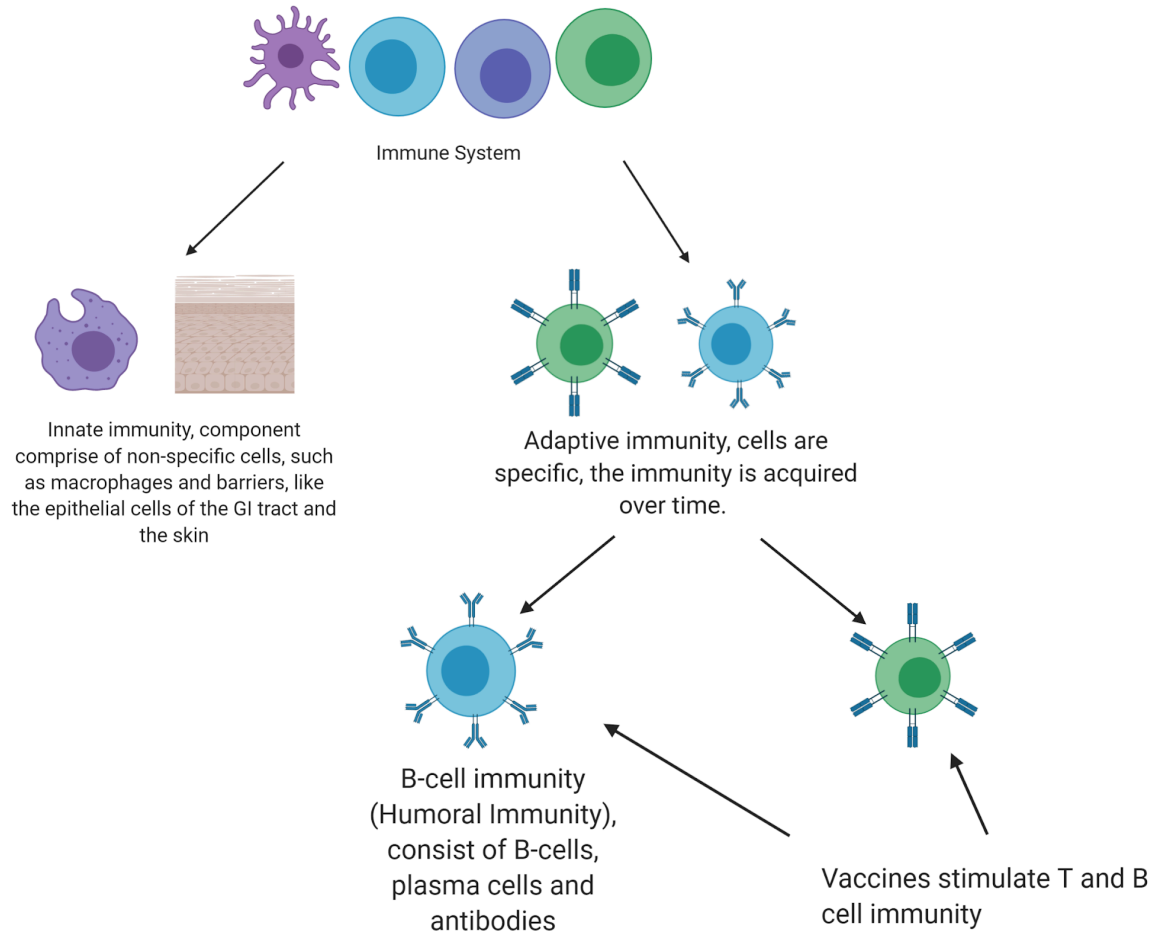
We wish you the best of luck on your exams!

Disclaimer: These flowcharts assume that you have thoroughly reviewed your material. This resource helps put all the flowcharts on in one shape

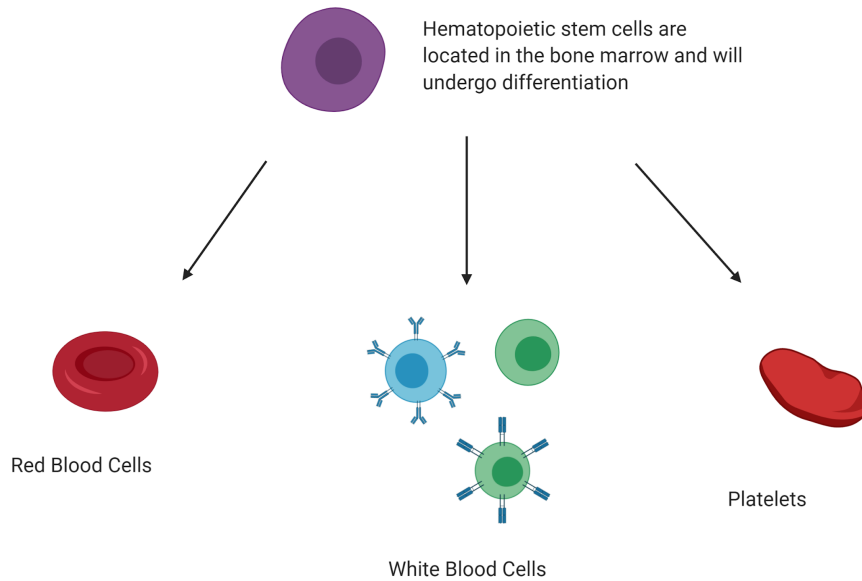
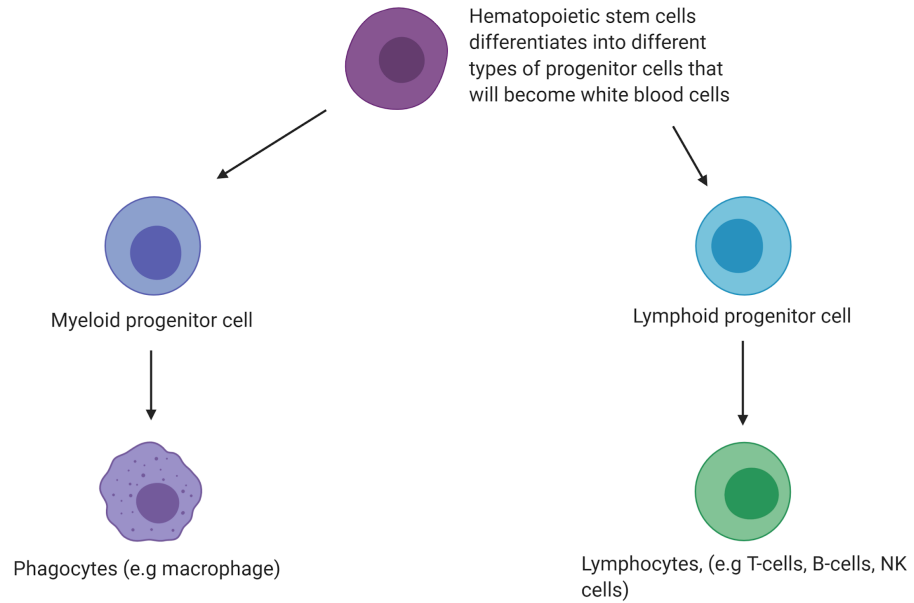
Stay up to date with what WebStraw has to offer. This resource was made by the resource design team at WebStraw. We are a student operated non-profit organization dedicated to providing open-access, high quality educational resources to university students.

To be notified when similar resources like this are released, subscribe to our email list [here](#) (we promise we won't spam you).

Components of The Immune System



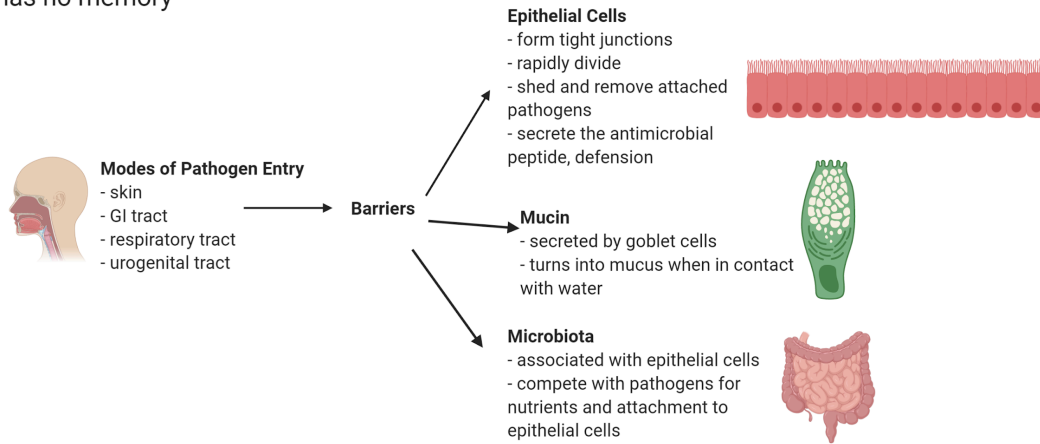
Cellular Differentiation

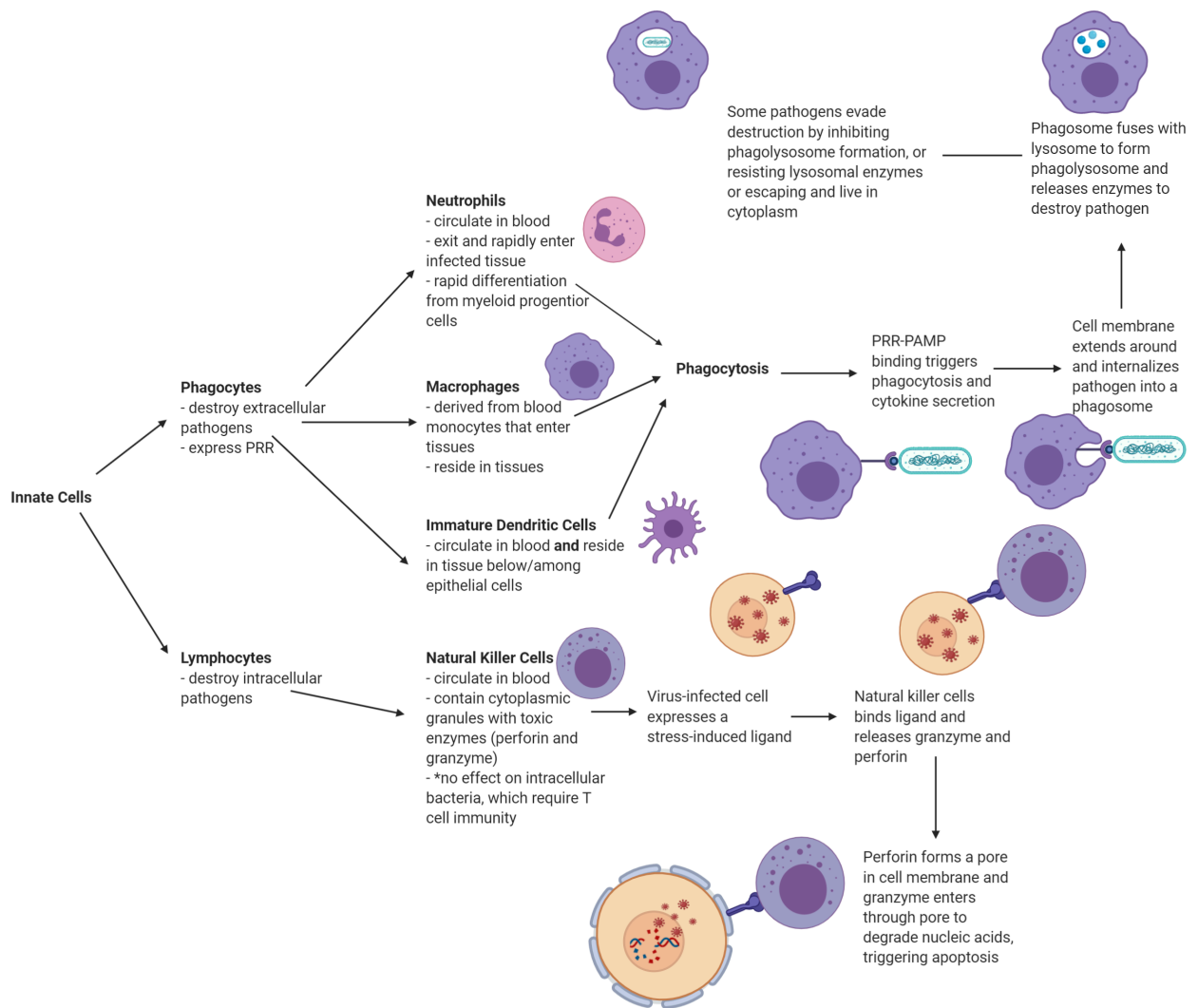


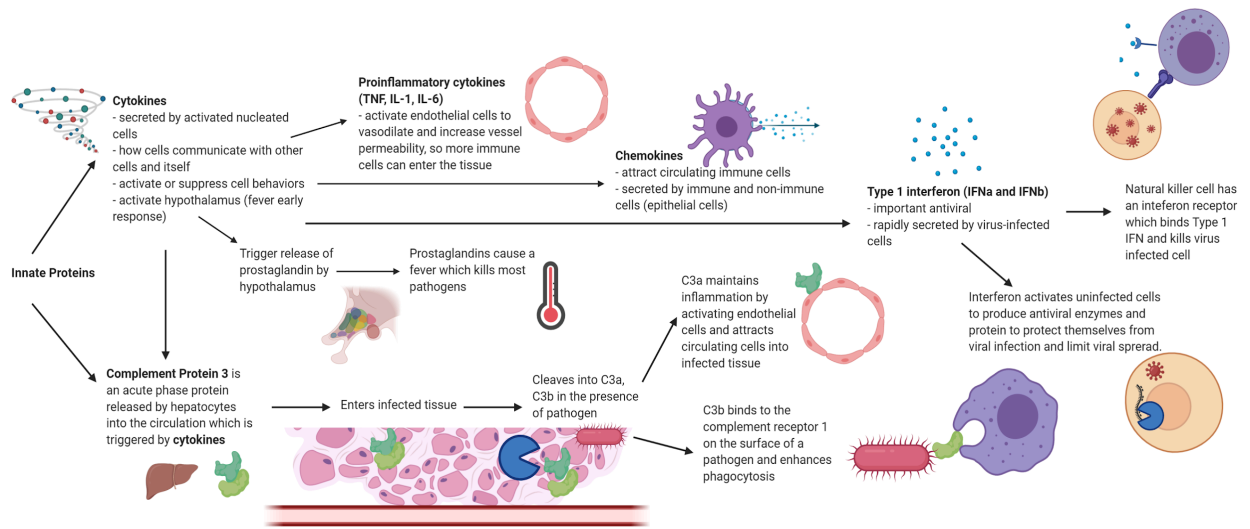
Innate Immunity

Innate Immunity

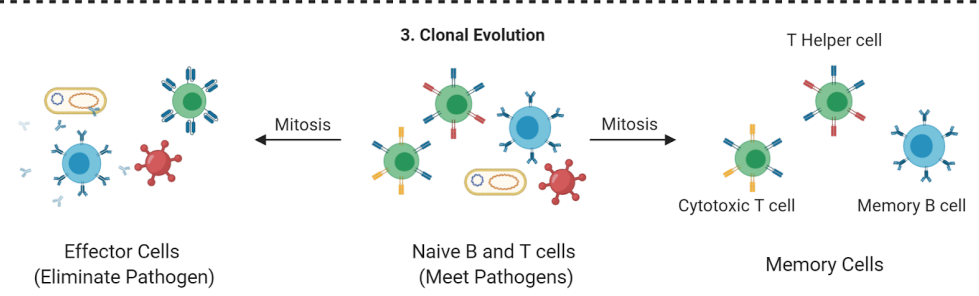
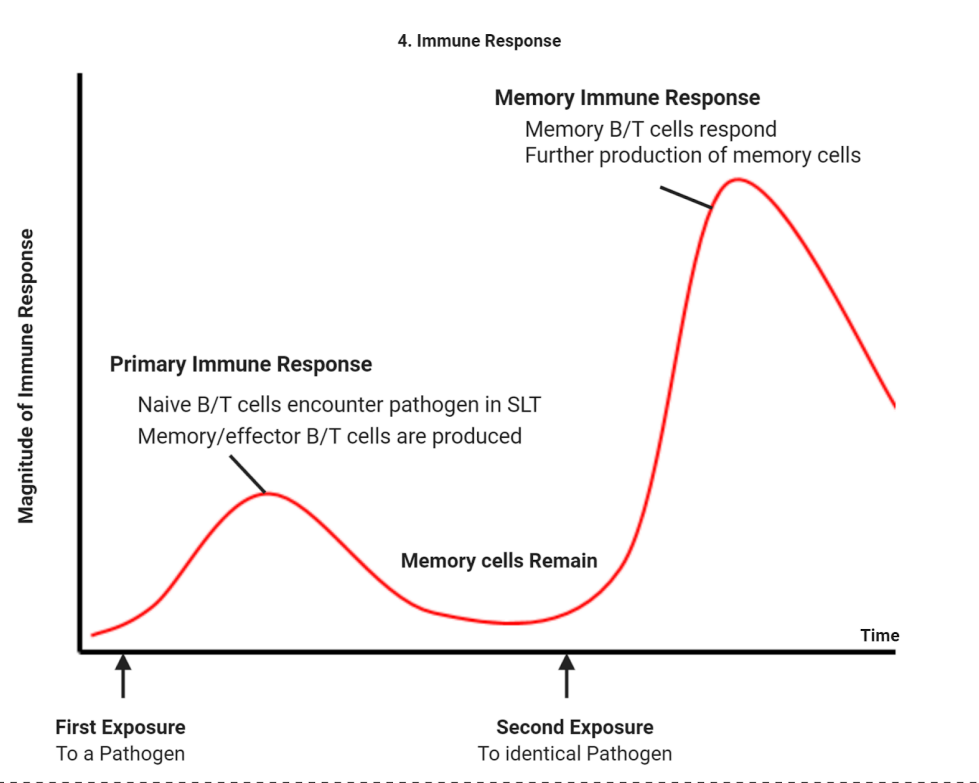
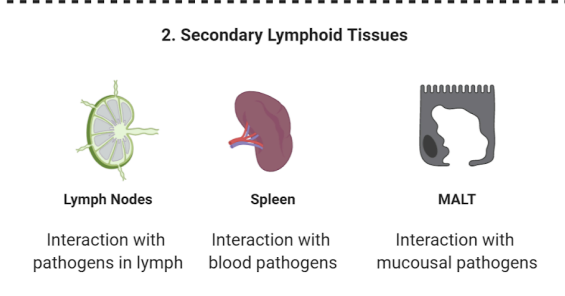
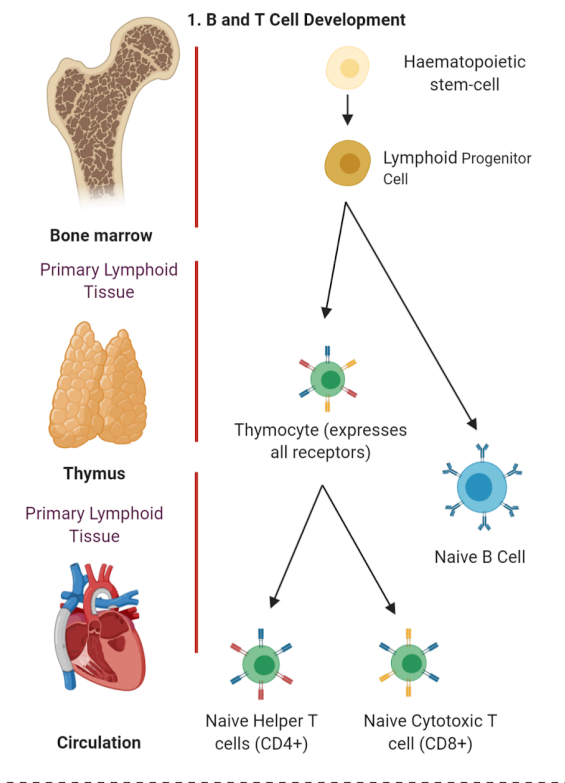
- always ready and initiated
- sometimes ineffective
- responds immediately
- has no memory



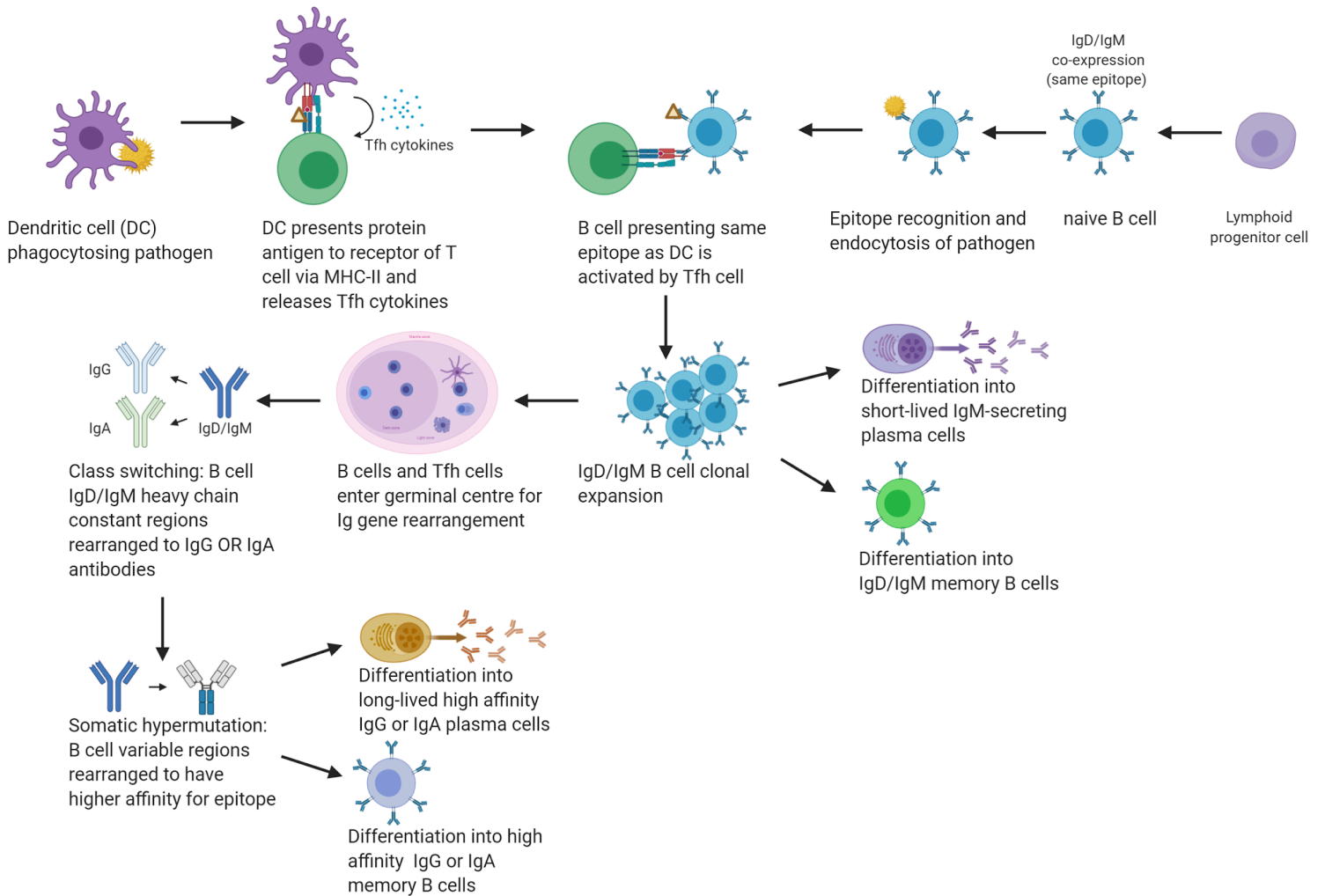


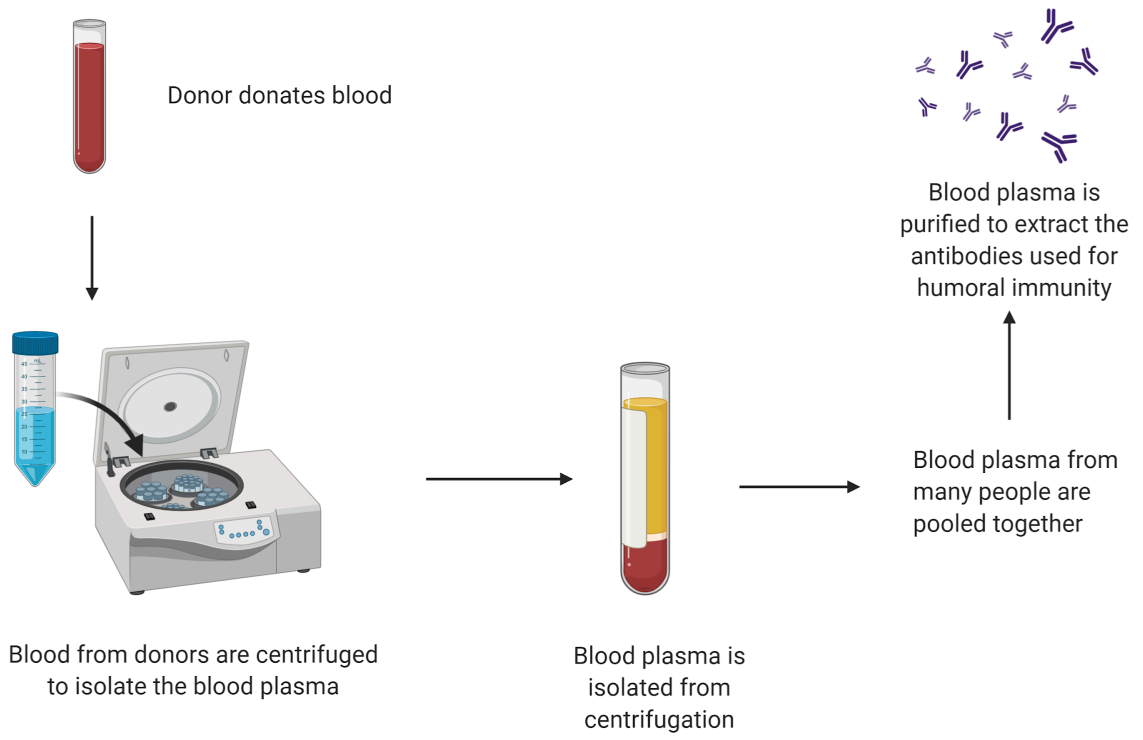


Adaptive Immunity

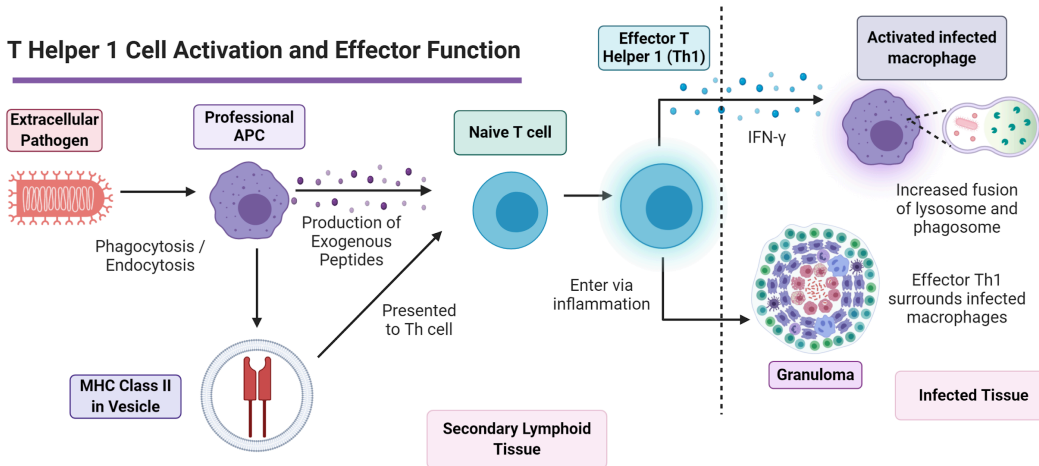
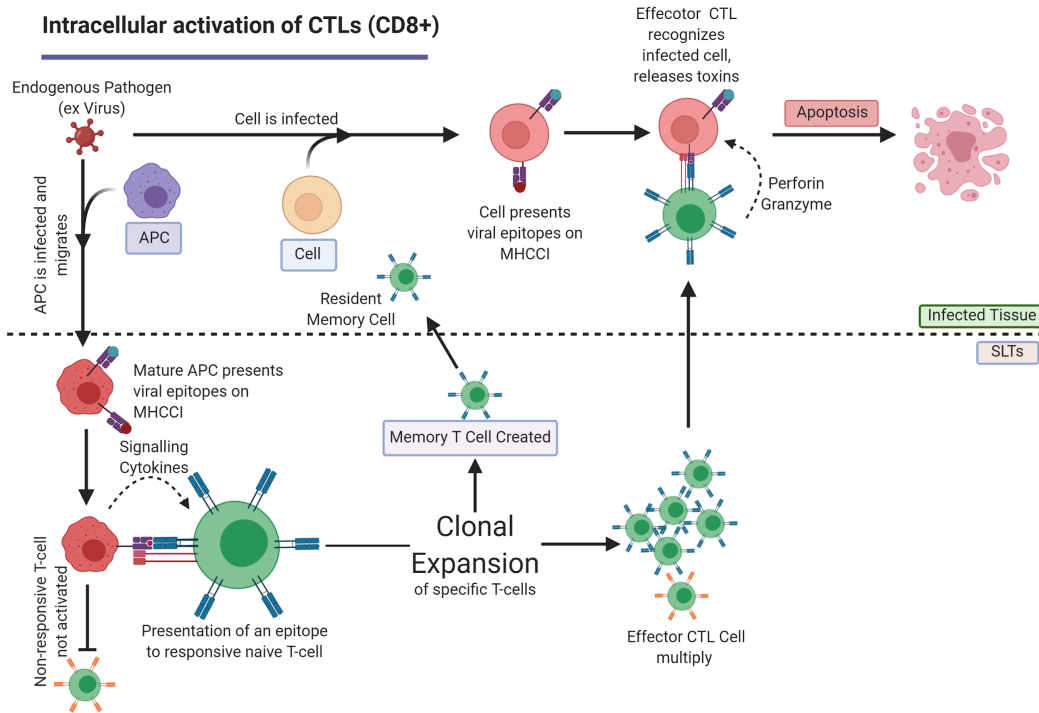


B Cell Immunity





T-cell Immunity



Vaccines

